

National Institute of Steel Detailing

Connection

Fall 2007



On the Job Site in British Columbia, Canada

Welcome to Our First Color Newsletter, page 5

NISD Members Coping With Major Disasters, page 9



SDS/2
DESIGN DATA

BIM STARTS WITH CONNECTIONS.



Connecting with your partners has never been easier.

Make BIM more than a buzzword. Implement a BIM work process in your company using SDS/2. With features and products like CIS/2 interfacing and the Global Review Station, SDS/2 helps create better connections with your project partners. The result: less repetitive data, better communication and short project completion dates. Stop talking about BIM and start profiting from it. Call or visit our Web site today.

www.sds2.com

800.443.0782

402.441.4000

e-mail: info@sds2.com

Connection

National Institute of Steel Detailing, Inc

Stephanie Andrew, Administrator
7700 Edgewater Dr., Ste. 670
Oakland, CA 94621-3022
510.568.3741, Fax 510.568.3781
email: nisd@sbcglobal.net

President

Robert Beauchamp
Québec Chapter 514.748.6161
robert@datadraft.com

Vice President

Michael D. Bowers
Southwest Chapter 972.226.6433
mike@mdbowers.com

Secretary-Treasurer

Paul E. Crockett
Member-at-Large 508.660.8954
paul.crockett@comcast.net

Chapter Directors

Alberta, Terry Devine
780.465.1520, terry@mddrafting.com

Arizona, Robert Schoen, Jr.
480.813.8966, roschoen@actionsd.com

British Columbia, Ewen Dobbie
604.606.5800, edobbie@dowco.com

California, Fred Tinker
310.522.1530, main@pacificdrafting.com

Central, Chris Harms
816.903.9533, chris@hrsteeldetailing.com

Dixie, vacant

Midwest, Leonard Olszak
219.887.1555, mcd@netnitco.net

Northeast, Michael Pelliccio
203.949.1952, michael.pelliccio@snet.net

Ontario, Christine McCulloch
613.394.4224
christinemcculloch17@hotmail.com

Pacific, John Linn
925.443.3363, jla-jtl@pacbell.net

Pacific Northwest, Dave Buck
541.389.2893

Pittsburgh, John Metcalfe
412.373.2640, metcalfe51@aol.com

Québec, Gérard Barbeau, P.E.
450.621.5557, trusquin@videotron.ca

Southern, Joel Hicks
205.956.4501, jth@structuraltech.com

Southwest, Mario Webber-Rookes
972.578.0001, wrdetinc@wrdet.com

ISSN#1076-5522

FROM THE PRESIDENT

NISD Influence Spreads Worldwide

2007 has been a busy year for the steel detailing industry. As the year draws to a close I am pleased to report the NISD has had another successful year. Membership has increased, our programs are being used, and NISD publications are in constant demand. The revised Individual Detailer Certification Program test is finished and being used.

Some members have had to survive fires, floods, droughts or earthquakes in various parts of the world and these sad events have made us aware that we are all members of a small community of steel detailers working to better our profession under the NISD banner.

The NISD no longer represents just North American detailers, and quite a few of our newer members are from countries all around the world. You could say that NISD influence has now spread worldwide.

The NISD is becoming an important teaching institution, as educational problems concerning the technical and business aspects of our profession are addressed. Education is one of our mission statement goals, so we shall invest in that direction. The steel industry needs us!

We are strengthening our ties with other players of the steel industry by participating with various organizations in the role of speakers, educators and publication

authors. There is a resurgence of demand from schools and universities for us to participate in programs and conferences. Although we cannot be part of all the offered events, we certainly have to maintain a presence in the spotlight. Our QP and IDC programs need to be promoted properly as we see the demand rising for them, especially in light of the globalization of our profession.

Our 2008 annual conference will be at the Embassy Suites Biltmore in Phoenix, AZ, May 29 through May 31, 2008. We are excited about the conference speakers and the schedule of events. Check out the preliminary agendas to come.

In closing, the Board of Directors joins me in wishing you and your family, a healthy and prosperous new year.

Robert Beauchamp
President



"...fires, floods, droughts or earthquakes... have made us aware that we are all members of a small community of steel detailers working to better our profession under the NISD banner."

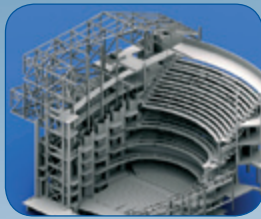


**For More Information
About NISD, Visit**

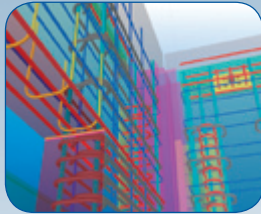
WWW.NISD.ORG

– Ray Young, Arup

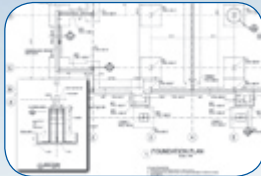
Structures That Do The Job



*COLLABORATE - Exchange
model data with architects
and other designers*

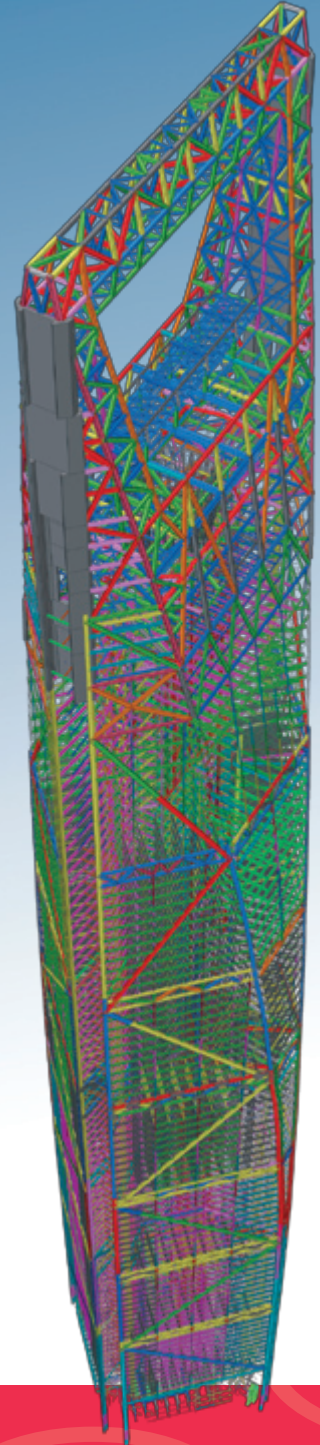


DESIGN - Use the best structural modeling tool to bring your ideas into practice



Size	Weight	Length	Wing	Tail	Legs
100-150g	100-150g	100-150g	100-150g	100-150g	100-150g
150-200g	150-200g	150-200g	150-200g	150-200g	150-200g
200-250g	200-250g	200-250g	200-250g	200-250g	200-250g
250-300g	250-300g	250-300g	250-300g	250-300g	250-300g
300-350g	300-350g	300-350g	300-350g	300-350g	300-350g
350-400g	350-400g	350-400g	350-400g	350-400g	350-400g
400-450g	400-450g	400-450g	400-450g	400-450g	400-450g
450-500g	450-500g	450-500g	450-500g	450-500g	450-500g
500-550g	500-550g	500-550g	500-550g	500-550g	500-550g
550-600g	550-600g	550-600g	550-600g	550-600g	550-600g
600-650g	600-650g	600-650g	600-650g	600-650g	600-650g
650-700g	650-700g	650-700g	650-700g	650-700g	650-700g
700-750g	700-750g	700-750g	700-750g	700-750g	700-750g
750-800g	750-800g	750-800g	750-800g	750-800g	750-800g
800-850g	800-850g	800-850g	800-850g	800-850g	800-850g
850-900g	850-900g	850-900g	850-900g	850-900g	850-900g
900-950g	900-950g	900-950g	900-950g	900-950g	900-950g
950-1000g	950-1000g	950-1000g	950-1000g	950-1000g	950-1000g

DELIVER – Produce quality plans, elevations and details directly from the model



Model: Financial Center, Shanghai, China

In addition to improved design efficiency, drawing output, change management, and multi-user collaboration, Tekla Structures software easily integrates with other systems, such as architectural, MEP process layout, and structural analysis & design solutions. The structural model that you create is used by detailers, steel fabricators, precast manufacturers, and contractors. Use the same model to save time and to ensure quality projects, which benefit everyone involved. Tekla Structures is the one tool that does the job from conceptual design all the way to detailing, construction and site management. Contact Tekla US for more information, call 1-877-TEKLA-OK



TEKLA® Structures

www.tekla.com



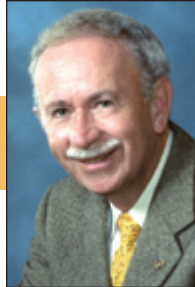
FROM THE EDITOR

Welcome to Our First Color Newsletter!

This is the first ever color issue of the Connection. I am really pleased that the board authorized us to do this one time color issue as a sample to see if it is worth the extra cost (about \$500.00).

I'd like your feedback on this so please let me hear whether you like it or not.

John Linn
Editor



Our fearless leader, President Robert, has asked that we do more in the Connection to place greater emphasis on the people of our Institute. We are a smaller size group of business people working in a demanding and unique profession. We have a lot of things in common with our fellow members and we would like to foster closer relationships and greater appreciation for one another.

In this issue, Tom Ayres of the Pittsburgh Chapter has taken the first step in this direction. He tells us all about who he is and what he likes to do outside of the office. Tom relates his background in steel detailing and his philosophy in business. It is especially nice that he included pictures of his beautiful family.

Tom obviously enjoys living in western Pennsylvania and working in the steel detailing industry.

I want to include more articles like this one in future issues so if you would like to join Tom, please send me a biography and a few pictures and share your story with all of us.



CALENDAR

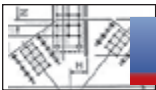
January 26 2008	NISD Board Meeting Myrtle Beach Embassy Suites Myrtle Beach, SC
February 21-23 2008	SEAA National Convention & Trade Show Grand Hyatt Hotel San Antonio, TX
April 2-5 2008	NASCC Nashville Convention Center Nashville, TN
May 29-31 2008	NISD Annual Conference Embassy Suites-Biltmore Phoenix, AZ
2009	NISD Annual Conference Embassy Suites Deerfield Beach, FL

SAVE THE DATE:
May 29th - May 31st, 2008



**2008 ANNUAL
CONFERENCE**

Phoenix, Arizona



NISD Members Coping With Major Disasters

by John Linn

In recent years, there have been a growing number of major disasters occurring in places all around the world. Our Institute is often affected by these occurrences because they happen in areas where our members live and work.

There was a recent major earthquake in Chile where we have several NISD members but fortunately it was in a remote section of the country. A couple of years ago hurricane Katrina hit hard in Alabama and Louisiana. We all knew about the terrible destruction and hardship this caused the people in those areas. As a caring organization of steel detailers we could have made contact with our fellow members there to offer any help we could to ease their suffering and get them back on their feet. Sadly we did not do anything. We hope to correct that in the future.

Recently there have been the terrible

wild fires in Southern California that burned down hundreds of homes and displaced many thousands of people.

Fred Tinker, California Chapter Director contacted all of the chapter members to see if they were alright and offered help to anyone in need. Luckily, everyone had survived okay although many of them had friends or family who had lost their homes to fire.

I talked to my friend Jim Rowland of Pacific Coast Detailing, which is located near San Diego. His office had to be evacuated but no one in the company lost their homes. The employees could not return to the office for a week or so but many of them could take their work home and were able to keep most of their projects on schedule. Jim sent me this nighttime photo, which can give you an idea of the magnitude of the fires and their close proximity to major populated areas.



Wildfires in Southern California light up the night sky.

Congratulations!



Chris Moor of AISC Marketing, holding his new baby son born November 1st. Congratulations to Chris and Karin.

**NEW YEAR'S
RESOLUTION!**

**Get I.D.C.
Certified
In 2008**

**The Newly-Revised
Test Is Ready.**

**For an application
go to
www.nisd.org**

Board Meeting and Software Expo

by John Linn

The October board meeting reflected the positive business climate that we detailing companies have been enjoying for the past several years.

President Beauchamp appointed new membership co-chairs, Terry Devine and Fred Tinker. Membership is staying pretty strong at 394 members. Some of the chapters are struggling to maintain their members but at-large membership is holding steady at 136 strong. The board would like to see more associate members brought into the chapters. The Alberta Chapter leads the way with the most fabricator members of any chapter and they enjoy a healthy, robust relationship by working together with the fabricators on their detailer training program.

Our new Administrator Stephanie Andrew is gaining more experience in her position and is now relying less on help from Valerie Montes. If you need any of our NISD publications or have any questions about NISD, give Stephanie a call. She is always ready to assist you in any way she can.

Vice President Mike Bowers has completed the revision of the IDC test. It is now more up-to-date and the test questions have been improved where they might have previously been confusing and difficult to understand.

Paul McGuire did a great job again this year in producing the Software Expo in Oakland, California. Unfortunately, this year's show was not as well attended as we had hoped. Some of the software companies did very well but others had little activity.

The board is looking into a new format for next year. The concept would be similar to software user meetings. We would have software program developers and program users (steel detailers) get together to help improve understanding of a software's capabilities and improve performance and efficiency in using it. This program format could serve not only to help detailers work better with the software programs but also to help the developers learn about the problem areas that might need improvement in their detailing software systems.

The 2008 Annual Meeting will be in Phoenix, Arizona. The 2009 Annual will be in Deerfield Beach, Florida.



The October Board Meeting and Software Expo weekend.



Our administrator, officers and board of directors.



NISD Publications

Guidelines for Successful Presentation of Steel Design Documents

....the Steel Detailer's Point of View

_____ @ No Charge _____

Certification Programs for Detailing Companies & Individual Detailers

_____ @ No Charge _____

NISD Informational Videos [VHS only]:

Introduction to Steel Detailing video

_____ @ US\$13.00 _____

Quality Procedures Program video

_____ @ US\$15.00 _____

[Regular, Associate & Overseas **new** members receive 1 copy free of the following manuals & CD]

NISD Industry Standard Manual

Member price _____ @ US\$30.00 _____

Non-member price _____ @ US\$45.00 _____

Detailer's Guide to Welding

Member price _____ @ US\$20.00 _____

Non-member price _____ @ US\$35.00 _____

**Detailing Guide for the Enhancement
of Erection Safety**

Member price _____ @ US\$45.00 _____

Non-member price _____ @ US\$55.00 _____

Beam Cards [CD only]

Member price _____ @ US\$15.00 _____

Non-member price _____ @ US\$20.00 _____

[Sorry no invoicing]

Total _____ **Total \$** _____

All above items going to addresses within the US include shipping & handling. Please allow 10 business days unless other arrangements are made at additional cost. **International shipping is extra.**

AISC/NISD Detailer Training Series of CD-ROMS: Contact AISC at 847-364-1222 or www.aisc.org

AISC/NISD Detailing for Steel Construction Manual [Second Edition]: Contact AISC at 847-364-1222 or www.aisc.org

Name: _____

Firm: _____

Address: _____

City: _____ State/Province: _____ Zip/Postal Code: _____

Phone: _____ Fax: _____ E-mail: _____

Method of Payment: Check _____  Visa _____  Mastercard _____

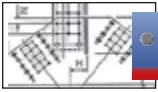
Make check payable & send to: **NISD, Inc.**
7700 Edgewater Drive, Suite 670
Oakland, CA 94621-3022

Credit Card Information: Credit Card #: _____ Expiration Date: _____

Name as it appears on card: _____

Signature: _____ Daytime phone: _____

For Information: Tel: (510) 568-3741 Fax: (510) 568-3781 E-mail: nisd@sbcglobal.net



Steel was the Answer

by Dave Buck

When I built my garage I wanted to put my office on the second story. Local regulations prohibited a two-story garage but I could build a story and one-half. I built it out of structural brick, same as the house. There were three options for framing the half story.

- Attic trusses but could not put dormers with them.
- Glulam beams would have to be 32" deep. I would have to build the first story 16" higher to have adequate headroom downstairs in my wood shop. Woodworking is my hobby.
- Steel was half the cost of glulams and half the cost of attic trusses. And I was able to put a dormer on both the north and south sides.

One dormer contains the bath and the plotter room with files. The other dormer has the fax, copier and the 11x17 printer on one side and a reference table on the other side. In the central area I have room for four computer stations with adequate reference tables plus workout equipment, weight bench, aerobic stair stepper and treadmill. I encourage workout breaks instead of the traditional coffee break.

I'm very thankful for the option of steel!



Steel beams allowing greater headroom.



Erection of longitudinal beam.

International Bridge Conference

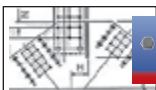
by Jack Metcalfe

The IBC, which is held every year in Pittsburgh, PA, has determined that it needs to reach out to more representatives of the construction community. Until now, seminars, sessions, and exhibits have been mainly geared to government transportation departments and authorities, as well as consultants and designers from around the world. Representing the detailer on setting the agenda is Michael Alterio of the NISD Pittsburgh Chapter, a well renowned bridge



expert, and Jack Metcalfe, NISD Director, Pittsburgh Chapter.

While not yet cast in ingots, items of interest are segmental construction; fail-safe systems for seismic and terrorist conditions; partnering; how construction bids are developed; erection considerations; and the durability of existing bridge structures and what to do with them. In addition to speakers at special sessions, panel discussions and booths are also being considered. Here again, is another opportunity for NISD to show the flag, not just to the North American market, but also to the world. Watch this space for more details.



Park Bridge – Kicking Horse Canyon, British Columbia, Canada

by John Linn

NISD member, Tenca Steel Detailing, Inc., has recently completed what I would describe as one of the most fascinating bridge projects I've ever heard about. I first learned about this project last year from Richard Anderson of Tenca Steel Detailing, who was then working to complete the detail drawings.

What fascinates me about this bridge is that in total it is over 1,300 feet long, it is curved, and to erect it the whole thing was launched from one side of a 300 foot deep canyon across five piers to the abutment on the other side of the canyon. Oh, and I almost forgot, the structural steel weight is 2,500 tons. I know this erection system might sound a little crazy but take a look at the photos and you'll see the girder frames as they were being launched across the fourth pier and on their way to the fifth one.

Here's how they did it:

The bridge consists of four girder lines with each line composed of thirteen 10-foot high girder sections. Two

girder lines were progressively assembled on the ground with the cross frames and sub stringers between. The two girder frames were pushed using hydraulic jacks with a travel of about 3 feet. Girders moved on rollers at the rate of twenty meters per hour. The nose section is removable, and is shaped like a sleigh runner to ensure the front end crossed above the pier before the girder itself was placed on it. As the girder frames slowly

progressed across the canyon new sections were added at the tail end until all 13 sections were assembled and pushed into their final position.

Richard Anderson said that this was the first multi-span bridge launched in Canada and possibly the first in North America. Because the bridge was launched, it had to be very stiff in torsion and also had to be sized longitudinally so



Two girder assemblies before launch.



Hydraulic jacks pushing the girder frames.

as not to sag too much as it traveled to the next pier. Some of the major problems that had to be overcome in detailing were due to the girders being curved and cambered, while the sub stringer running parallel between the main girders was not cambered. That situation required variable thickness beveled shim plates to bolt the sub stringers to the top of the cross frames (70 connection points per sub stringer line). The top lateral braces were

bolted to the non cambered sub stringers, which then required the use of variable thickness beveled shim plates there also.

The result of this innovative erection system and the great detail and erection drawings done by Tenca Steel Detailing was that the contracted construction was completed 21 months ahead of schedule and with savings of approximately 18 million dollars.



The nose section crosses the first pier.



Girder frame crossing the fourth pier.

National Lien Digest – Discount For NISD Members

The NISD national office keeps up-to-date information on the requirements to file liens, pre-liens, and bond claims in all 50 states and Canada. If you don't wish to file your own lien forms, the company that provides this information, NCS of Cleveland, Ohio will file the pre-liens and liens for you for a discounted fee if you mention you are an NISD member.

Tel: 1-800-826-5256. Their website: www.ncscredit.com also offers Lien Direct online.

The NISD office also has a copy of The National Prompt Pay Digest. This digest is designed to serve as a reference source for prompt payment to contractors, subcontractors and material suppliers. It provides a summary of each state's Public and Private Prompt Pay Statutes (not Canada, sorry). The digest includes information pertaining to Constructive Trust Laws.

Contact the NISD office to have information on any state/province laws e-mailed to you.

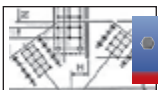
NCS sells a CD called Lien Tracker NTO, a solution to tracking and managing construction deadline dates. The software helps you identify and prioritize the required actions under the Mechanic's Lien statutes. Its flexibility allows you to create your own deadline dates from your own set of criteria. Contact NCS for further information.

Important Notice: Mechanics Lien

It behooves all our members to file mechanics liens on every job. Many of you are complaining about not getting paid; you don't have other recourses unless you file a mechanics lien.

If your customer gets upset about the filing, it can only mean he/she doesn't want to pay you, otherwise what difference would it make to him/her.

Ronald Montes, Pacific Chapter



Get To Know Tom Ayres, New President of the Pittsburgh Chapter

The Pittsburgh Chapter has just held its election of officers. Jack Metcalfe was retained as national director, Frank Mercurio was retained as chapter treasurer and Tom Ayres was elected president. Jack Hoy stepped down after serving well for two years as president. We would like to give you an up close and personal view of Chapter President Tom Ayres.

Tom is serving his second time as president. He was president for several years prior to Jack Hoy taking the helm two years ago. Many may remember Tom as the keynote speaker at our national conference in San Antonio, Texas a few years ago where he spoke on the subject of foreign competition.

Tom started detailing in November of 1967 as a trainee for Tri-State Drafting in Pittsburgh after graduating from high school. He worked a short stint as a detailer in the early 1970s for Levinson Steel, which at the time was one of the larger fabricators in Pittsburgh. He also worked several years for B. B. Barefoot and Associates in Murrysville, PA. There

he headed the detailing department and managed the construction of wet scrubber systems and their support steel. While at this company he got valuable experience in the field working with erectors and fabricators. From there Tom went to Olympic Enterprises. He worked from 1976 until October of 1990 as the chief draftsman of 10 detailers. Tom oversaw such projects as the 1.4 million square foot Honda automobile plant in East Liberty, Ohio and parts of the PPG office complex in downtown Pittsburgh.

It was in October of 1990 that Tom established Developed Structures, Inc. in Waynesburg, PA. This small coal mining town in south western Pennsylvania has a population of about 5,000 and is 70 miles south of Pittsburgh and about 25 miles north of Morgantown, West Virginia.

Tom has been married to his wife Linda since 1974. They have a daughter Becky, a son-in-law Jason and 2 wonderful grandchildren. Tom and Linda enjoy living at their country home in Ruff Creek, PA. Their home is set upon 11 acres atop a

mountain with a great view. Ruff Creek is a village of about 200 people in the foothills of the Appalachian Mountains. Tom loves the mountains but not the snow, is not a big fan of the seashore and is not much of a city boy.

Tom enjoys motorcycling and is president of a local chapter of a national motorcycle association. He rode his bike to Wyoming from his home in Ruff Creek, PA. and back in 2005, a 5000-mile trip. This summer he is planning a trip to circle the great lakes. He is also planning a trip to Colorado and Utah in 2009. He would love to see the Rocky Mountains and Alaska from a bike before he dies.

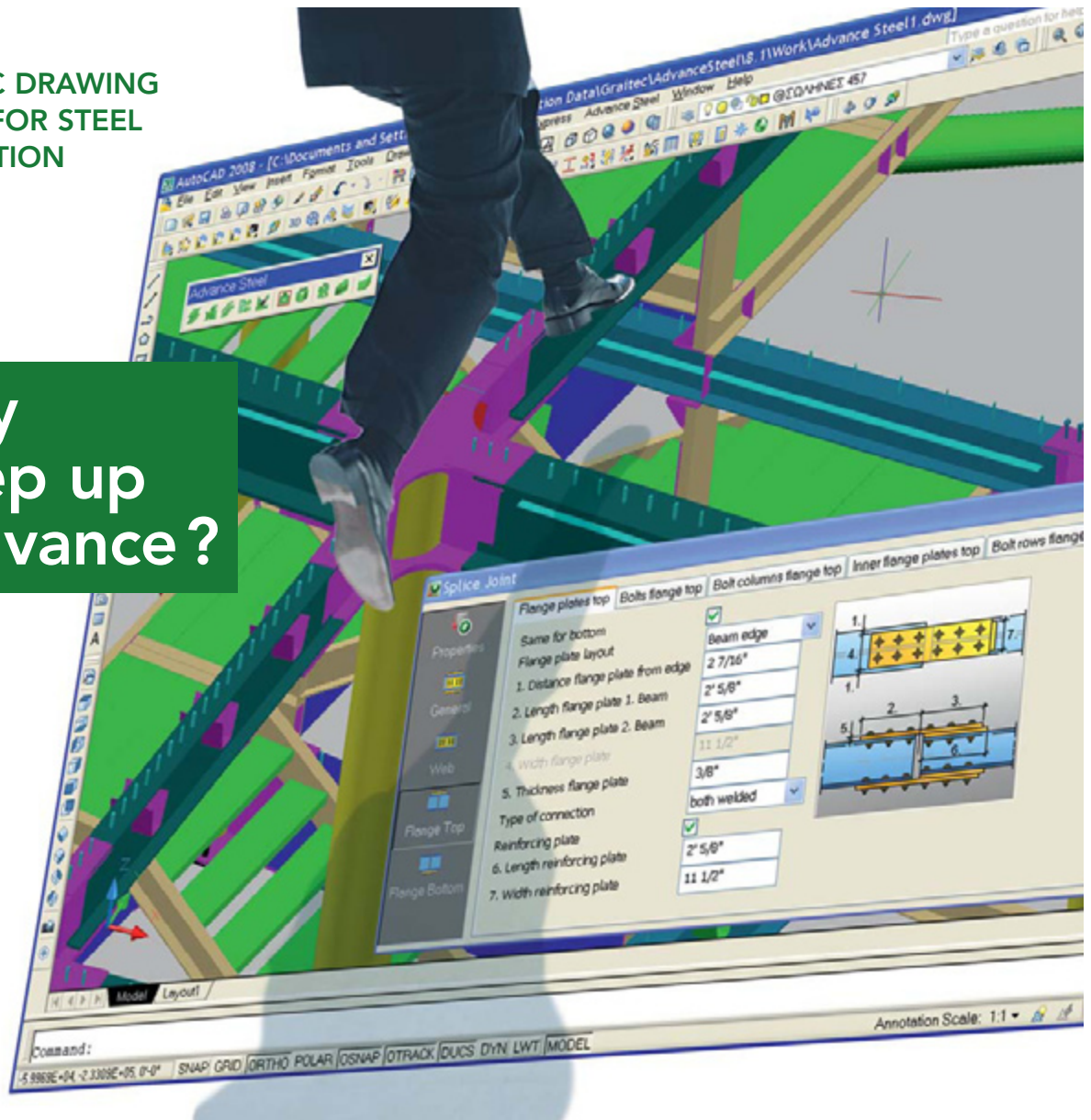
Tom is a fan of the Pittsburgh Steelers and the Pittsburgh Penguins hockey team but is not much of a baseball fan. He likes to laugh and have fun, play poker with his buddies and drink a few beers. Tom attends a local Methodist church and believes that honesty in business is the only real way to have success. His hope for the Pittsburgh Chapter is that it will once again be one of the NISD's leading chapters.



Tom Ayres, Pittsburgh Chapter President, left. Tom and his wife Linda, top-right. The Ayres grandchildren, bottom left to right.

AUTOMATIC DRAWING
CREATION FOR STEEL
CONSTRUCTION

Ready
to step up
to Advance?

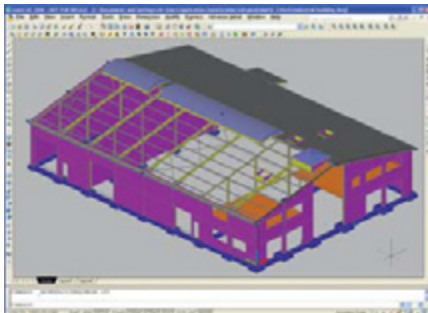


GRAITEC advance

Advance Steel makes you more productive:

- 100% Integrated to AutoCAD® (support for 2004 to 2008)
- Quick and user-friendly 3D Modeling
- Complex assemblies snap in place and are configured in seconds
- Advanced features for miscellaneous steel/stairs/bent plates...
- Automatic creation of all drawings, lists and NC fabrication files...

Call now for 1 on 1 demo and free 15 day trial.



Advance Steel is part of GRAITEC Advance,
a comprehensive software suite for construction professionals.

GRAITEC USA / Canada
Toll free number: (877) 464-3366
info.usa@graitec.com

www.graitec.com





NISD – INDIVIDUAL DETAILER CERTIFICATION

FOR CERTIFICATION AS A STEEL DETAILER

APPLICATION

Please print clearly or type:

FIRST NAME _____ LAST NAME _____

LAST 4 DIGITS of SS# or SIN# _____

ADDRESS (Home) _____

CITY: _____ STATE/PROVINCE: _____

ZIP/POSTAL CODE: _____ COUNTRY: _____

TEL: _____ E-MAIL: _____

CURRENT EMPLOYER (if applicable) _____

ADDRESS: _____

CITY: _____ STATE/PROVINCE: _____

ZIP/POSTAL CODE: _____ COUNTRY: _____

TEL: _____ E-MAIL: _____

Indicate which address (no P.O. Box) is best to receive IDC materials: ☐ Home ☐ Employer

Classification:

- _____ **Senior Detailer – Class I**
Minimum 10 years experience – including checking
- _____ **Detailer – Class II**
Minimum 5 years experience or 3 years detailing experience
and have satisfactorily completed the AISC/NISD training series

Category:

- _____ **Structural/Miscellaneous**
- _____ **Bridge**

Cost for U.S. and Canadian applicants

Total fee per category \$300 [in US Dollars]

Non-refundable processing fee due with application: U.S./Canada \$100

Remainder of fee due 10 days prior to exam date: U.S./Canada \$200

Cost for International applicants

Total fee per category \$500 + proctor fee

International \$200

International \$300

*Please submit experience history, and either a letter of recommendation from a steel fabricator, **OR** a Certified Class I detailer, **OR** a NISD national director. When your application is processed, you will receive a Study Guide and information about test dates and locations.*

Method of Payment: (in US Dollars)



☐ M/C

Credit Card Number: _____ Expiration Date: _____



☐ Visa

Name as it appears on card: _____

☐ Check

Signature: _____

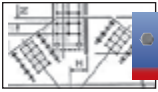
Amount Enclosed: _____

**Please send completed application
and processing fee to:**

National Institute of Steel Detailing, Inc.
7700 Edgewater Drive, Suite 670
Oakland, CA 94621-3022

Tel: (510) 568-3741
Fax: (510) 568-3781
E-mail: nisd@sbcglobal.net

Re-certification is required every 3 years.



IDC INTERVIEW

NISD established the Individual Detailer Certification (IDC) Program to evaluate an individual's detailing knowledge. This recurring feature will provide insight from detailers who have received their Individual Detailer Certification through NISD. The following interview is with Jeanne Hirsh of Vega Steel Detailing in Pittsburgh, PA.



Jeanne Hirsh

Q In which discipline and category are you certified? Bridge, Structural/Miscellaneous: Senior Detailer/Detailer.

A I am certified in the discipline of Structural/Miscellaneous Senior Detailer – Class 1.

Q How many years of detailing experience do you have?

A I have almost 29 years of detailing structural and miscellaneous steel. I began training in October of 1978.

Q Why did you choose steel detailing as a profession?

A My mentor, an elderly structural engineer/detailer, encouraged me to pursue steel detailing as a career. He said the industry needed people like me to carry on the work. He also guaranteed that I would always have a job as a steel detailer and he was right about that. I find detailing very challenging, interesting and rewarding. I was illustrating at a very young age, and knew I wanted to work in a field where I could put my talent to good use.

Q Are you self employed or working for a company?

A I've been self-employed since February 2006. I had worked 16 years for one steel fabricator in Santa Clara, CA, and 11 years for several fabricators in Ventura County, CA.

Q Did you have to go through the AISC/NISD CD training series before taking the exam and receiving your certification?

A No, I did not go through the AISC/NISD CD training series. I received my certification in 1998 under the Grandfather Clause.

Q Did your exam results offer an accurate assessment of your detailing knowledge?

A The exams I've taken every 3 years to maintain my certification have offered a good assessment of my detailing knowledge. I gain new information every time I take the exams. I also realize that I've come to learn much along the way.

Q Are there any changes, additions or deletions that you would like to have made to the exam?

A I think it would helpful to focus a little more on detailing terminology, maybe have more questions related to the glossary of terms. But the re-certification exams have been great so far, I really don't have much to add or suggest at this time.

Q Would you recommend the IDC program to others? Why?

A I have recommended this program to other detailers, since I think it adds credibility to this profession. It broadens one's perspective about detailing.

Q How has your certification helped you in your job?

A Since I became self employed in 2006 the certification has helped my reputation. My business card shows that I am a certified steel detailer, and that helps to show that I'm professional at what I do. Besides having many years of detailing experience, the certification shows that I have credibility.

Q How has your certification helped you as a detailer?

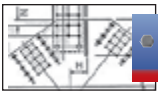
A As I mentioned in the above question, it has helped in many ways.

Q Would you encourage other women to become steel detailers?

A Yes, I would certainly encourage other women to become steel detailers, and I have done so over the years. This is the 21st century and women are accepted in many male dominated occupations.

Q Are there any challenges women face in the steel detailing industry? If yes, what are they?

A My biggest challenge as a woman in the steel industry has been self-imposed. In the early years, my lack of self-confidence was the source of my problems. But I continually received compliments on my detailing, which encouraged me to persevere. I've always felt that the steel detailing industry accepted me as a woman. I am proud to contribute to this line of work.



CHAPTER NEWS & NOTES

Alberta Chapter

by Terry Devine,
Director

All are extremely busy although the client drawings are still coming in batches and not a steady flow. The apprenticeship program is moving along very well. We have the third year study guide proof read at this time. We continue to have our regular chapter meetings and all looks positive.



California Chapter

by Fred Tinker, Director

The California Chapter would like to thank everyone for their prayers and kind thoughts during the fires around Southern California. I contacted members in the Southern California area and all, with the exception of Jim Rowland and the employees of Pacific Coast Detailing, reported they were safe and out of harm's way. Jim reported that they had to evacuate the office, as the power was shut off. He also reported that he, and a few employees, had to evacuate their homes due to safety reasons. I checked back with Jim a few days later and all were able to return to their homes safe and sound. Jim also reported that they were back at work and busy as ever. Thank you to President Robert Beauchamp for offering the help of the NISD, should anyone need something.

In December, the California Chapter is invited to tour the facility of Cal West Galvanizing. They are the biggest galvanizer on the West Coast. If possible I will include some pictures with the next article. This is the company that gave me information for my talk at the NASCC, and is currently helping me with the Galvanizing Chapter for the book entitled "Detailer's Guide to Cleaning, Painting, Galvanizing and Fireproofing", due out next year.

At the NISD Software Expo in Oakland, California, two of our chapter members,



Dick Morrison and Greg Daneshvar took the opportunity to look at some of the detailing software's latest updates. The software on project managing for detailers and fabricators is a subject that I have been following for a while. I feel this software is just about 'there' with what we need to keep track of a job these days. The NISD also gave the Individual Detailer Certification test that weekend and Greg Daneshvar of the California Chapter volunteered to be the proctor. Thank you Greg!!!!

While I was calling around checking on chapter members during the fires, I had the opportunity to speak with Ralph Sorrentino (Member Emeritus). Ralph is one of the founding fathers of the California Chapter. He reported that he was not threatened by the fires and to tell everyone "Hello".

This summer the California Chapter held its election of officers. They are as follows:

Fred Tinker President
Jim Truitt.....Vice-President
Greg Daneshvar.. Secretary
Richard O. Morrison...Treasurer
Fred Tinker.....NISD Director

I want to wish everyone a safe and wonderful holiday season.

Have a great summer!

Pacific Chapter

by John Linn, Director

The Pacific Chapter has been quietly busy in recent months. Everyone has plenty of work. Schedules have been demanding so everyone has been lying low and working hard.

Our chapter recently had the pleasure of hosting the board of directors meeting, which was held in Oakland, California. After the board meeting, Ron and Val Montes invited everyone to a cocktail party at their home. Pacific Chapter members picked the board members up at



their hotel and drove them to the Montes' house and, later, from there to a local Italian restaurant, and then after dinner back to the hotel. It was a great time for our chapter members to meet and get acquainted with some of the great people on our board of directors.

Québec Chapter

by Gérard
Barbeau, Director



First of all, the Québec Chapter's representatives attending the Oakland board meeting, would like to thank the Pacific Chapter, on behalf of all our members, for their friendliness, and for creating a good mood at the last reunion. We enjoyed very much the hospitality, the food, the wine and the super nice people! It really felt like a big family atmosphere. Thanks again; can't wait to go back!

November 1st saw the Canadian Institute of Steel Construction Québec Region celebrate the 10th anniversary of the Steel Awards of excellence. During this event, the Institute underlined steel structures for their originality, their complexity and their vocation. We congratulate Genifab and Techdess who both won awards for detailing on some of the winning projects.

Young detailers are in training. Eighteen students are registered for the connection design course offered by Ahuntsic College, in collaboration with the CISC and their members who have registered students.

Additionally, the Québec detailer apprenticeship program has started with 40 detailers registered. Congratulations to Steltec, BDSD, Cadmax and Trusquin for their involvement. We encourage other drafting offices and fabricators to join the program.

Autumn has been pretty dry...but winter has now reached us with the first snowfalls over the province's land.

In the name of the Québec Chapter, I wish you happy holidays. Have fun with your family, friends and colleagues. Let 2008 be a successful and healthy, peaceful year.

Southern Chapter

by Joel Hicks,
Director

The Southern Chapter has lost some membership this year. Some of the member firms have chosen not to renew, leaving us with only 4 member firms at this time. However, we do have prospects for increasing our membership.

We decided to have a booth at this year's NASCC in New Orleans and it was very well received. Our Secretary, Alan Blankenship of Nationwide Detailing took the initiative and created business cards for our chapter listing all the member firms. Together with David Duckworth of D Duck Inc. and myself manning the booth, we enjoyed a steady stream of visitors. Many past and future clients and interested parties came by to look over our drawings and materials and just to chat. Overall, we felt that it was a success and worthwhile venture. As an added bonus, members of the former Dixie Chapter stopped by the booth and are planning to join our chapter.

We plan to have a meeting in the near future and will probably invite the former member firms to try to entice them to rejoin.

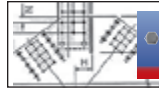
Overall, the market continues to be strong in our area. As far as I can discern, everyone is busy.



Dan Petersen
Cascade Design
Longview, WA

Structural/Miscellaneous Detailer – Class II

Luis A. Villarreal
LVJ Steel Detailing
West Haven, CT



QPP

QPP Renewals

Members At Large

Steel Dimensions, LLC.
12820 Dayton Pike
Soddy Daisy, TN 37379
steeldim@comcast.net

Steel Systems Engineering, Inc.
4340 Fulton Ave.
Sherman Oaks, CA 91423
simon@sseus.com/maria@sseus.com

California Chapter

Pacific Drafting, Inc.
22010 S. Wilmington Ave., Suite 401
Carson, CA 90745-4369
main@pacificdrafting.com

Pacific Chapter

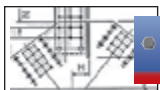
John Linn Associates, Inc.
1799 Portola Ave., Suite 3C
Livermore, CA 94551-7947
jla-jtl@pacbell.net

IDC Program Congratulations!

This regular feature recognizes detailers who have recently taken and passed the IDC test. The listing is by discipline and class, followed by the detailers in alphabetical order.

Structural/Miscellaneous Senior Detailer – Class I

Gary Feuerstein, P.E.
Mech Studio
Corvallis, OR



IDC

Another Call for the NISD QPP

From a Ford Motor Co. plan specifications, designed by Albert Kahn Associates, September 2007

1.03 SYSTEM DESCRIPTION

A. Detailing, fabrication, and erection of structural steel construction: Comply with requirements of AISC documents named under heading, References, except as modified in this section.

- B. Detail, fabricate, and erect steel to AISC Code of Standard Practice tolerances except that fabricating, rolling, and erection tolerances shall not be cumulative.
- C. Fabricator shall be certified by the AISC Quality Certification Program in either Category II or III; or equivalent program that establishes and administers a quality assurance program that ensures work is performed in accordance with the Code of Standard Practice for Steel Buildings and Bridges, the AISC Specification, and the contract documents.
- D. Intended that architectural and structural drawings be cooperative and structural items shown or referred to on architectural drawings are included as if shown on structural drawings.

1.04 SUBMITTALS

A. For Review

1. Shop drawings.

- Include firm name preparing shop drawings on Proposal Form.
- Recommended that structural steel shop drawings are prepared by firm certified under National Institute of Steel Detailing Quality Procedures Program.

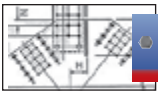
c. Make complete shop drawings clearly showing pieces, details, and connections.

- 1) Reproduction of Architect-Engineer's framing plans is not permitted for this purpose.
- 2) Prepare independent complete erection drawings showing marks of all pieces.

d. Detail drawings shall be 24 by 36 inches; drawings of any other size will be marked NOT Acceptable and returned to Contractor, unless approved by Architect-Engineer prior to start of drawings.

**For More Information
About NISD, Visit**

WWW.NISD.ORG



NEW MEMBERS

Individuals

Kenneth Bradshaw

KB Details
1404 Brown Trail – Suite 1
Bedford, TX 76022
Tel: 817-285-0909
Fax: 817-285-0918
kbbdetails@aol.com

Rita J. Cass

1159 S. Rife
Aransas Pass, TX 78336
Tel: 361-332-9437
rjcdraft@msn.com

Louis A. Easterling, Sr.

Connected Structural Group LLC
2280 S. Jones Blvd.
Las Vegas, NV 89146
Tel: 702-804-1535
Fax: 702-405-1229

Radim Kurek

E-Steel Studio, Ltd.
4415 W. Harrison St., Suite 215
Hillside, IL 60162
Tel: 773-457-1014
Fax: 708-236-0833
info@e-steelstudio.com
www.e-steelstudio.com

Kenneth M. McCollum

1615 W. Smith Ave., Apt B103
Kent, WA 98032
Tel: 712-899-1799
neozequoix@yahoo.com

Brian Moore

Compass Structural Detailing
841 Briar Thicket Rd
Bybee, TN 37713
Tel: 423-613-4369
Fax: 423-613-8475
bmoore@compassdetailing.com
www.compassdetailing.com

Brian Moskow

Tyndall Engineering & Design, PA
P.O. Box 31144
Raleigh, NC 27622
Tel: 919-880-7950
brianmoskow@earthlink.net

Diego Penafiel

DM Detailing
11 S. 489 Rachael Ct.
Hinsdale, IL 60527
Tel: 630-297-2109
dmdetailing@yahoo.com

Edgardo Rosario

LA Structural Steel Detailing
230 N. Berendo St.
Los Angeles, CA 90004
Tel: 213-446-1608
Fax: 213-381-3375
egr@lasteeldetailing.com
www.lasteeldetailing.com

Ron Rothert

R & R & Co. Steel Detailing
39465 Calle San Clemente
Murrieta, CA 92562
Tel: 951-67-0468
Fax: 951-600-8347
ron@rrcosteeldetailing.com
www.rrcosteeldetailing.com

James L. Shaff

James Shaff – Structural Steel Detailing
103 Hedeman Ave
Wright City, MO 63390
Tel: 636-297-7565
Fax: 636-745-8376
james@jshaff.com
www.jshaff.com

Eric J. Vaughan

Vaughan Drafting Service
30581 Lake Point Dr.
Menifee, CA 92584
Tel: 951-301-9319
vaughandrafting@msn.com

Members At large

Dutch Industries Ltd.

300 Portico Drive, Box 568
Pilot Butte, Saskatchewan S0G 3Z0
CANADA
Tel: 306-781-4820
Fax: 306-781-4877
mbooy@dutchind.com
Michael Booy

Harrell's Steel Detailing Service, LLC

4797 Pearidge Road
Grenada, MS 38901
Tel: 662-294-9031
Fax: 662-229-0424
jerryh@hughes.net
Jerry Harrell

Ingenieria Tecnica

Antonio Bellet 77, Piso 12
Providencia, Santiago, CHILE
Tel: 562-264-0306
Fax: 562-235-7531
ingtec@adsl.tie.cl
www.ingenieriatecnica.cl
Jorge Salgado

The Stor-Con Co., Inc.

16111 Cairnway Dr., Suite 190
Houston, TX 77084
Tel: 281-550-3933
Fax: 281-550-3934
lmcox@stor-con.com
www.stor-con.com
Larry M. Cox

United Steel Inc.

164 School St.
East Hartford, CT 06108
Tel: 860-289-2323
Fax: 860-289-2908
ppproto@unitedsteel.com
www.unitedsteel.com
Paul Proto

US Steel Stairs

2109 Green House Ct.
Las Vegas, NV 89134
Tel: 800-958-4131
Fax: 800-958-4148
ussteelstairs@earthlink.net
www.ussteelstairs.com
Russ Marshall

Alberta Chapter

CADD Alta Drafting and Design, Inc.

#3 – 10032 29th Avenue
Edmonton, AB T6N 1A8
CANADA
Tel: 780-461-3550
Fax: 780-461-3550
gstokell@caddalta.com
Gary Stokell

Overseas Members

IDDC Engineers Pvt. Ltd.

196 Jawaharnagar, Goregaon West
Mumbai, Maharastra 400062
INDIA
Tel: +91 222 874 2517
Fax: +91 222 873 7061
sachin.joshi@iddcindia.com
www.iddcindia.com
Sachin Joshi

Associate Member

Cumberland Detailing Service

1064 Harrisburg Pike
Carlisle, PA 17013
Tel: 717-299-6999
Fax: 717-249-5553
cumberlanddetailing@earthlink.net
www.cumberlanddetailing.com
Michael McGullion



National Institute of Steel Detailing

Membership Application

The annual membership cycle runs from June 1st through May 31st

- ☐ **Regular Membership** is open to any company that conducts its office in the Americas for, and is regularly engaged in, the business of steel detailing. Such office shall have been conducted for a minimum period of one year. A member in this category may be chapter affiliated or a member-at-large, and has all privileges and benefits of membership including voting and holding office.

Fee Schedule: \$290 for companies with a gross annual income of less than \$250,000 [June-September]
Prorated dues when joining October-January \$200 February-May \$100

\$450 for companies with a gross annual income greater than \$250,000 [June-September]
Prorated dues when joining October-January \$305 February-May \$155

- ☐ **Associate Membership** is open to any company, national or regional trade or professional association interested in enhancing the detailing profession or the activities of the NISD, whose primary business is not in structural steel detailing. This category includes all privileges and benefits of membership except those of voting and holding office.

Fee Schedule: Annual membership fee is \$360 [June-September]
Prorated dues when joining October-January \$245 February-May \$125

- ☐ **Individual Associate Membership** is open to a steel detailer working on his/her own with no employees or contract workers. This category also includes other persons interested in the future of the steel detailing industry who do not fall in the category of Regular or Associate membership. This category has limited privileges and benefits of membership, which precludes them from voting and holding office.

Fee Schedule: Annual membership fee is \$65 Annual dues of \$65 are renewable on June 1st

- ☐ **Overseas Membership** is open to any company that conducts a regular office for, and is regularly engaged in, the business of steel detailing outside the Americas. Such office shall have been conducted for a minimum period of one year. Members in this category may vote (no proxy votes), but they may not hold national office.

Fee Schedule: Annual membership fee is \$360 [June-September]
Prorated dues when joining October-January \$245 February-May \$125

- ☐ **Member Emeritus Membership** is open to any individual who was a former regular member of the NISD and has retired from the competitive field, but wishes to remain active in the NISD. Members in this category may not hold office.

Fee Schedule: Annual membership fee is \$100 Annual dues of \$100 are renewable on June 1st

The undersigned hereby applies for membership in the National Institute of Steel Detailing, Inc.

Name _____ Title _____

Company Name _____

Address _____

City _____ State/Province _____ Zip/Postal Code _____

Country _____

Telephone _____ Fax _____

E-mail _____ Web site _____

Payment in US Dollars

Membership Fee: US\$ _____

Postage/handling, add:
\$20 for Canada \$ _____

\$35 for International \$ _____

TOTAL ENCLOSED US\$ _____

Method of Payment

☐ Check, payable to: **NISD, Inc.**
7700 Edgewater Dr., Suite 670
Oakland, CA 94621-3022



☐ MasterCard ☐ Visa

Number: _____ Expiration Date: _____

Signature: _____



The power to innovate

Project: Steepbank Mine
Client: Suncor Energy
Engineers: Colt Engineering Corp
Detailers: Krupp Canada
Fabricator: M&D Drafting Ltd
Fabricator: Waiward Steel Fabricators Ltd



'We fast-track detailed the Suncor Energy Steepbank Mine Dry Surge Stacking Conveyors using StruCad.'

The clash detection system in StruCad was vital in the elimination of access problems and member conflicts. This feature when combined with StruCad freeware was invaluable in facilitating efficient project team collaboration. The quality and accuracy of the 8975 automatic drawings generated for this project was first rate and all concerned were very complimentary.'

M&D Drafting Ltd.

StruCad

The World's Leading 3D
Structural Steel Detailing System

AceCad
SOFTWARE

www.strucad.com

t: 610 280 9840

e: sales@strucad.com

